



Patron
Sir Zelman
Cowan



With support
from Port
Phillip City

St Kilda Historical Society (SKHS) Established 1970
St Kilda Times

email info@skhs.org.au PO Box 177, 3183

Quarterly Newsletter Issue No 205 Mar 2011— May 2011
www.vicnet.net.au/~hsosk click 'news'

Diary
SKHS events
on back page

ANZAC DAY
liftout inside

**WHO'S BEEN
LIVING
AT YOUR
ADDRESS?**

You can find out the names of residents who lived at your address from the late 1800s to the 1970s by consulting SKHS' collection of Sands & MacDougall Street Directories.

An open 1973 directory, is currently on display in our glass cabinet St Kilda library study area. It shows the names of former residents in street addresses beginning with the letter "C" e.g. Charnwood St.

To arrange a viewing of the Directories email us at info@skhs.org.au or leave a message on SKHS office phone, 9209 6866.

AMBLE THROUGH HISTORY:

St Kilda Botanical Gardens

Leader: Patricia Convery

Sunday 20 March 2011

members free

non-members \$5

pre-bookings only limited numbers light refreshments
time and meeting place when booking
email: info@skhs.org.au phone/message 9209 6866
mobile 0405 510 799

2011 NeW iDeaS 2011

The 2010—2011 Committee is more than happy to receive member's ideas and suggestions for any heritage or cultural activities, guest presenters, tours, functions, re-enactments or other you might like to organize on our society's behalf. Please contact a committee member on info@skhs.org.au or ph/message 9209 6866.

FUNQWZ 2011

With members' support and in partnership with Friends of Suai Port Phillip City, SKHS Committee are considering putting on a Saturday night **COMMUNITY FUNQWZ**. [*Bottle of wine for the member who comes up with a quirky caption/slogan for the QWZ.*]

It is proposed the FUNQWZ takes place on Saturday night, 3 December 2011 at St Kilda Sports (Bowling) Club Fitzroy Street (venue to be confirmed). Plus, Carmel Shute has kindly agreed to be our QWZ Host.

Entry: \$20members, \$25public, \$150 tables of 8. **25% discount for Early-Bird bookings before 31 October: \$15, \$20, \$100 tables of 8.** [*All proceeds less overheads/expenses to SKHS and Friends of Suai for their respective upcoming projects.*]

To help make it all happen SKHS Members are requested to pledge support by RESPONDING to any of the following before March 30 2011:

Who will [a] attend the event [b] help us organise the FUNQWZ [c] donate prizes & giveaways [d] pre-book /sponsor a table of 8?

Contact details: Mail: PO Box 177, B'clava 3183; Email: info@skhs.org.au
leave phone message on 9209 6866 or ring mobile 0405 510 799

NB If not enough interest indicated by members before March 30, the QWZ will be put on hold.

SKHS

Secretary: Email: info@skhs.org.au
Mail: PO Box 177, B'clava 3183

Inquiries & Appointments

Email: info@skhs.org.au
Phone Message 9209 6866
Mobile 0405 510 799

Office: St Kilda Library, by appt.
150 Carlisle St, Balaclava 3183

Heritage Advice:

heritage@skhs.org.au
Phone: 03 9525 3696
PO Box 1154, St Kilda South,
Vic. 3182

Newsletter: St Kilda Times

Email info@skhs.org.au

Publications: www.skhs.org.au

Website: www.vicnet.net.au/~hsosk
click "news"

COMMITTEE of MANAGEMENT

2010-2011

| | |
|-----------------------|----------------|
| President | Peter Johnson |
| Vice President | Vacant |
| Secretary | Dorothy Lobert |
| Treasurer | Vacant |

OPERATIONS**Administration**

Dorothy Lobert

Collection

Kitty Barclay
John Kissane
Maureen Walker

Foyer Displays

vacant

Heritage Queries

Peter Johnson

Hospitality & Welfare

Joan Charlton

Library

Dorothy Lobert

Membership

Dorothy Lobert

Newsletter: St Kilda Times

Frances Bader

Webmaster:

John Hulskamp

COMMITTEE MEETINGS

6-8pm every 1st Monday
bi-monthly from February,
SKHS Office, St Kilda
Library. To raise an issue or
make a suggestion, please
notify the Secretary 24 hrs in
advance so it can be
included on the agenda.

NEWSLETTERS

St Kilda Times is published each
quarter, 1st week Mar, Jun,
Sept, Dec.

Deadlines for news and notices:
Tuesday two weeks prior.

ARTICLES & ITEMS

St Kilda Times welcomes emailed
items relating to present and
past aspects of St Kilda's
history for possible future
publication — not more than
1 x A4 page, 12pt font Mi-
crosoft Word. Please email to:
info@skhs.org.au to attn Editor.

SKHS BUSINESS

COLLECTION ROOM FLOODED

Our Collection Room was flooded on 5.2.2011.
Peter Johnson and Dorothy Lobert worked all day
moving as many items and objects as possible to
the safety of SKHS Office.

PRELIMINARY ASSESSMENT 07.02. 2011

by Peter Johnson:-

- * Skating Girl: If her electrics can be dried out she may still be operational. However, her casing will probably need to be replaced;
- * Pictures: 1 large framed print resting on the floor water damaged;
- * Freestanding timber objects: water damaged;
- * Floor: Carpet tiles sodden;
- * Humidity about 100%;
- * In the immediate future we will probably have a big problem with mould growth.



Image
Peter Johnson
Feb 2011

CONTRIBUTORS to SKHS COLLECTION

SKHS appreciates the following contributions to our Collection from: -

| | | |
|----------------------|--|--|
| Marie Dowling | Photograph & Booklet | Friends of St Kilda Library 1996 Privatisation Campaign |
| Jennifer Edge | 2010 Banner and Pennant Keyring 3 Coasters depicting campaign wars. | St Kilda Football Club St Kilda Cricket Club West St Kilda RSL |

SKHS HERITAGE DISPLAY: Foyer St Kilda Library

"Pubs of St Kilda" images is the subject of SKHS' next display during March
in the Foyer Showcase, St Kilda Library.

CAROL STALS: SKHS EXHIBITIONS OFFICER

SKHS regrets to announce that "Pubs of St Kilda" will be the last display
mounted by Carol Stals, our inimitable Exhibitions Officer for the last six
years

When Carol, who also volunteers at the Koorie Heritage Trust and U3A,
agreed to take on her SKHS role in 2005, she brought a wealth of
knowledge and expertise to our society.

And since then, each March, July and October she instigated, researched,
prepared and presented a corresponding number of 2 & 3-D displays
relating to St Kilda's heritage (incl. Balaclava, Elwood and Ripponlea).

Subjects spotlighted by Carol have included:- Elwood; Vida Goldstein; St
Moritz; Art Deco St Kilda; Architects of St Kilda; Domes of St Kilda; Gay
St Kilda; Literary St Kilda, Lost Schools of St Kilda; Memorials, Plaques
and Plinths; Nautical St Kilda; Old St Kilda; Sport & Recreation; St Kilda
by the Sea, and now in March 2011, Pubs of St Kilda (with assistance
from Maureen Walker).

In addition, Carol organised four annual SKHS Creative Arts Awards
initiated by SKHS Committee for students attending St Kilda Primary
Schools. Participating schools were:- St Kilda Park, St Kilda Brighton Rd,
Ripponlea State School and St Columba's, Elwood.

Furthermore, Carol, assisted by Dorothy Lobert, helped Linda, Port Phillip
City Children's Librarian, mount exhibitions of the original artworks for
Children's Week in St Kilda Library.

SKHS is very, very grateful for all the time, energy and enthusiasm Carol so
generously contributed to our society and wish her well in the future. We
are missing her already. (FB)

POSITIONS VACANT

Currently, SKHS has vacant positions on its committee and wants to hear from members who are willing to put in a little time and effort towards helping run our society.

If you have access to the internet and skills in any of the following (or willing to learn) :-

- * administration, accounting/book-keeping
- * publishing and proof-reading
- * historical research, heritage displays

Please contact info@skhs.org.au

NB Any financial member is eligible to apply.

NEW MEMBERS

SKHS welcomes the following new members and looks forward to meeting you at our functions.

John Clemens

Anne Thompson

The 2010—2011 Committee urges all members to promote and publicise our Society as well as encourage friends, relatives, colleagues and work-mates who are NOT yet members to take out subscriptions to SKHS. Perhaps you could introduce friends to the Society by gifting them a membership for birthdays and anniversaries or bring them along to one of our members' events.

QUERY

Hi Folks,

I'm intrigued by the decorative panels [pictured right] as you enter the St Kilda Public Library.

It may be purely decorative but it looks like a cuneiform script.

Does anyone at the History Society know anything about it, specifically...

(i) is it a known script? And if so

(ii) anyone know what it says?

I have inquired at the Library itself without success.

All the best ...

John M.



Image : John M. 2010

IRISH BARM BRACK RECIPE provided by VALMA LEONARD

SKHS member Valma Leonard will not only bake one of her famous Irish Barmbracks* for members to enjoy after ambling through St Kilda Gardens on March 20, she has kindly agreed to share her traditional family recipe with us.

PREPARATION

Valma tells us the secret to making a successful Barmbrack is pre-soaking the mixed dried fruit overnight in cold tea as this makes the dried fruit softer and tastier.

However, on the following day, one must be careful not to over-knead when mixing the rehydrated fruit with the dough because it may break up and — we could end up with Spotted Dick.

In the interests of inter-cultural relations, if any member has a recipe for Spotted Dick we'll publish it in another issue (Editor).

*"Barmbrack" is thought to be a variation of the Celtic words, *bairin* a loaf and *breac* translating as speckled. Barm (often mispronounced Barn) may have derived from 'beorma' NW European Galindian for yeast, and some say it may even be the source word for the city of Birmingham.

INGREDIENTS

- 1 lb mixed dried fruit
- 1 cup cold (real) black tea
- 1 egg, lightly beaten
- 1 cup brown sugar
- 2 cups self raising flour
- 4 teaspoons marmalade (optional)
- 1 teaspoon mixed spice (optional)

METHOD

After soaking the dried fruit in the tea, next day add sugar and egg to the mix.

Sift in the remaining dry ingredients. Mix very gently. Use a 7" baking tin. Bake in moderate oven for approx 1½-2hrs .

Cool on a wire rack. Slice.

Butter (not margarine) each slice.

SKHS HERITAGE PROTECTION POLICY by Peter Johnson

The SKHS believes that it has an important role to play in the protection of our built environment.

However, as there is so much of the St Kilda and Elwood area that is covered by Heritage Overlays, it is an enormous task.

Clearly our volunteer-run Society does not have the resources to fight every application that has a heritage component in it. Therefore it must be selective.

SKHS's current policy is that:-

- * the place concerned must have considerable cultural significance (ie must be on a local, state or national list created by a recognised agency);
- * SKHS will only put arguments based on heritage grounds;
- * SKHS will not argue based on neighbourhood character or amenity issues.

VILLAGE BELLE, 198-202 BARKLY STREET, ST KILDA



William Pitt, Architect
Image: Wikipedia

SKHS' objection to Planning Application N° 871/2009 on grounds of loss of cultural significance (currently at VCAT)

Source: "Grounds for Objection" by SKHS Heritage Officer, Peter Johnson, published in previous *St Kilda Times*.

The St Kilda History Society acknowledges the importance of William Pitt (1855-1918), designer of the Village Belle Hotel, 1891, to the architecture of Melbourne.

It is often forgotten that Pitt grew up in this part of St Kilda, the Pitt family home being not far away from the site at *Hythe*, 17 Milton Street.

Pitt was educated at Hofwyl School, 192 Barkly Street just a few doors away from the hotel, and although he "defected" to Abbotsford and supported Collingwood Football Team, he chose St Kilda Cemetery as his final resting place.

Other important local work by William Pitt includes the following buildings:

Beaconsfield Hotel (1880)

341 Beaconsfield Parade

Payne's Terrace (1885)

7-13 Robe Street

Hile Terrace (1886)

27 The Esplanade,

St Kilda Town Hall (1888)

Brighton Road



Village Belle 1912
Image: SKHS Files



Image: J. Hulskamp, 2004,
Pots, Punks & Punters,
SKHS Online Publ. 2004



St Kilda City Hall

... Although some of Pitt's grandest buildings have since been demolished ... some fine examples of his architectural work remain — The Princess Theatre; the former Bryant & May Factory in Richmond plus others — and William Pitt is still strongly associated with the boom era of Marvellous Melbourne.

SKHS OBJECTS to PLANNING APPLICATION 932/2010: 12-14 GREY STREET, ST KILDA

PETER JOHNSON Architect v: (+61 3) 9525 3696

PO Box 1154, St. Kilda South Vic 3182 e: pjarchitects@gmail.com

Wednesday, 9th February 2011

Attn: Phillip Beard, Chief Executive Officer,

City of Port Phillip, Private Bag 1, St Kilda VIC 3182

Dear Sir,

Planning Application 932/2010 – 12-14 Grey Street, St Kilda

On behalf of the St Kilda Historical Society I wish to object to the granting of this permit.

The site is in an extremely sensitive historic area.

Much of St Kilda's history has revolved around this and earlier buildings on this site.

To the north of the subject site we have the four-storied George Hotel (1888) designed by the architect Harry Browse Gibbs (1858-1918). This hotel is arguably the most significant hotel in St Kilda.

Next door on the south-east we have 2 two-storied shops designed by the prominent colonial architect George R Johnson (1840-1898) in late 1870. More details about George R Johnson's career can be read at <http://adbonline.anu.edu.au/biogs/AS10250b.htm>.

Originally there were three (see figure 1).

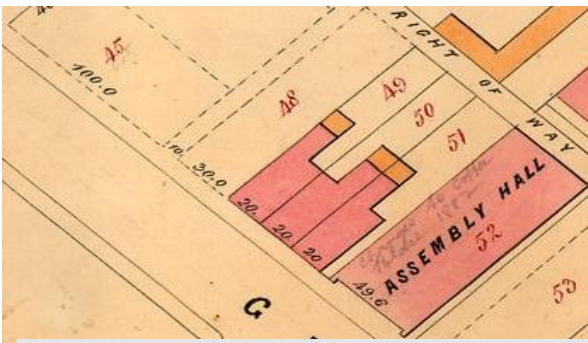


Figure 1: shows subject site as property #48 and adjacent shops #49-51 from John Vardy, Plans of the Borough of St Kilda, West Ward plan #3 (1873)

... : 1848-1954) (about) ◀ Wednesday 4 January 1871 ▶ ◀ Page 3

GEO. R. JOHNSON, architect, invites TENDERS
for the ERECTION of three SHOPS, in Grey-
street, St. Kilda. Plans and specification at his office,
32 Collins-street west, where tenders are to be sent on
or before Friday noon, 13th inst.

Figure 2: Argus tender notice for the adjacent shops, 4 January 1871.

However the southern-most shop was demolished in about 1936 when Johnson's grandson, Harry R Johnson (1892–1954), designed Casa Milano at 20 Grey Street.

On the opposite side of the street we have an intact run of late Victorian shops and a former bank. This group forms a very coherent whole.

Our concerns generally relate to how the proposed design impacts on the neighbouring historic properties:

- The scale is inappropriate. The mass of the proposed building is too great and the elevations too high for this site. It will tend to dominate the streetscape.
- The external appearance is an uncompromising design statement that does little to relate to its neighbours and is generally unsympathetic. This will be visually jarring in the streetscape and have the effect of fragmenting the existing grouping.

We feel that in its current form the proposal should be rejected.

Yours sincerely,

Peter Johnson

President, St Kilda Historical Society Inc.

Proposed Serviced Hotel
 12-14 Grey St
 Image reproduced from
 artist's impression on
 architect's plans submit-
 ted to PPC Council
 Height indication arrow
 inserted by St Kilda
 Times



SIGNIFICANT ST KILDA ANNIVERSARIES

LUNA PARK'S 98TH BIRTHDAY



Just two years prior to its centenary in December 2012, Luna Park celebrated its 98th birthday with a yummy cake on Monday, 13 December 2010.

A few SKHS funsters, who were out and about representing our history society, saw Luna Park Executive Director Mary Stuart unveil a 25m long 3-D sculptural mosaic, *Dreaming with Eyes Open* by Bentleigh-based artist Pamela Irving*, and watched as Lindsay Fox, part-owner of Luna Park since 2005, cut the ribbon.

Irving's artwork may be viewed on the front façade of the Luna Palace, the white dodgem car building, and judging by the effect her work had on party guests, it is a popular addition to the Amusement Park.

* Irving is also known for her cast bronze dog statue 'Larry La Trobe', one of two free-standing art works in the Melbourne city square [the second is the Burke and Wills statue].



Luna Park qwkpix: FBader Dec2010.



LUNA PARK

Main Sources: Luna Park website. SKHS website--article by C. Woo, 1991; Feature by F Bader, *St Kilda Times*, Issue 181, Feb-Mar 2008

As soon as it opened in 1912, Melburnians adopted St Kilda's Luna Park as its favorite playground and since that time, like Melbourne itself, it constantly reinvigorates itself.

LUNAR ORIGINS

Luna Park's origins go back to New York in the late 19th century where a number of competing amusement parks sprang up to cater for the entertainment and relaxation of large numbers of working people.

The first Luna Park opened in Coney Island in 1903, and its name echoes the popularity of a ride called *A Trip to the Moon* previously developed by Dundy & Thompson, the new Coney Island operators.

In 1911 the Greater J.D. Williams Amusement Company (Canada) while seeking to expand their operations overseas acquired a lease to build a new outdoor amusement park on crown/public land in St Kilda for a ten year period at £400p.a.

Together with Herman, Harold and Leon Phillips from Seattle and some twenty other fun fair experts and technicians including the Whitneys and the Nelsons (refer next col.), the company began work on constructing Luna Park.

T.H. Eslick who had worked in the amusement park industry for over 14 years in many countries was chief designer and builder.

If members have photos of any of the above individuals, do let SKHS know by emailing info@skhs.org.au or ring the SKHS office on 9209 6866 and leave a message.

NATIONAL SIGNIFICANCE



Luna Park is considered to be of national significance and classified by the National Trust who regard it as important for its early date, rarity, continuity of use and for its symbolic association with St.Kilda and Melbourne.

Despite being threatened with "development" on more than a few occasions, Melbourne's Luna Park remains one of the world's most enduring amusement parks under private management.

Its Scenic Railway is possibly the only one of its kind still in operation and with the best view and, according to employee, Mark Harrison, who started in 1990 as a rides operator (*The Age*, 13 Dec 2010, p20) '... It's like the Sydney Harbour Bridge: we have three full-time carpenters working on it ...'



UNLIMITED FUN for EVERYONE

Entry to Luna Park is free and an Unlimited Ride Ticket gives one access to all the Park's rides and attractions. As well as the brand new Coney Island Drop, there are:- three roller coasters; six thrill rides, Pharoah's Curse, Metropolis, Enterprise, the Spider, Twin Dragon, G force, and eight other favourites.

Families are encouraged to come and experience the new Rock 'n' Tug, simulating a tugboat in choppy waters, the Arabian Merry, Carousel, Sky Rider Ferris wheel, Silly Serpent, Ghost Train, Scenic Railway, Red Baron; Dodgems and the amazing Mirror Maze and the Holodeck.

If you bring the family along you can enjoy a whole day of rides for \$125. Family consists of 2 adults + 2 children or 1 adult + 3 children. In addition to the 17 rides and attractions, there are great games to play at Luna Park where you can test your skills, compete with your friends, and even win some amazing prizes.

E & B H NELSON

... My grandparents, Edith and Benjamin Harrison (Harry) Nelson, came to Luna Park, St Kilda in 1912 with George & Leo Whitney from Seattle.

The Whitney Brothers had developed a 'while-you-wait' photographic system and Harry Nelson worked as a technician (electrician?) in the 'Whitney Bros Electric Studio'.

Visitors could be photographed in a motor car or motor boat, sitting on the moon, standing next to a giant beer bottle, dressed as a cowboy in front of a horse yard scene, or appear to be bathing in a tin tub. The take home photographs could also be bought as postcards.

The scanned photographs I've included [below] show different views of St Kilda Beach and early Luna Park ...

D Nelson
Dec 2010



Photographs used with kind permission of C. and B. Jensen. Images provided by D. Nelson.



MEMORABILIA

If you have any items of interest, stories, etc, or wish to sponsor the work of the Elwood Life Saving Centenary sub-committee in some way, contact Christine Evely, phone 9596 4111 or 0418 105 825 email cevely@bigpond.net.au

LUNA PARK CENTENARY 2012

Luna Parks executive director, Mary Stuart is looking for your personal and/or your family images of Luna Park to help create a photo montage for the Parks 100th birthday in two years time. (See also P6)

Should you, your relatives or friends have any interesting Luna Park pics, please let us know.

Bring them to an SKHS meeting so we can scan and return the originals to you and pass on the reproductions to Luna Park

LINDEN GALLERY

POSTCARD SHOW

2011 marks the 20th anniversary of Linden's "postcard show", an open entry award exhibition, featuring small format contemporary works.

2011 Exhibition:

Linden Centre for Contemporary Arts,
26 Acland St

Entry: Free

Sat 5 Feb—Sat 26 Mar
Tues—Fri 1PM—5PM
Sat & Sun 11AM—5PM

CENTENARY OF ELWOOD LIFE SAVING CLUB

Believed to be the very first volunteer Royal Life Saving Club in Victoria, Elwood Life Saving Club was established at Point Ormond, Elwood in 1911 on land thought to have been the old rifle range.

Until then, one could only bathe in the many enclosed "bathing houses" dotting the shores of Port Phillip Bay so the Club's founding members lobbied for a change in legislation to allow "open sea" and "mixed sex" swimming.

The Foundation Stone of the Club's first permanent clubhouse was laid on 5th October, 1918 near the beach end of Head Street and quickly became an integral part of Elwood's social fabric.

By the mid-1920's it had nearly 500 members! At various times it had its own football, tennis, table tennis, gymnastic and card teams in local competitions.

Elwood lifesaving Club was the only club allowed to operate its own ambulance service and it became one of the focal points for water safety around all of Port Phillip Bay.

The original clubhouse building was demolished in the early 1970's and new premises built with assistance from the City of St. Kilda. In 2004 the Club moved into the John Conabere Pavilion, a new facility purpose-built with assistance from Sails on the Bay and Port Phillip City Council .

* The Royal Life Society of Australia formed in Sydney in 1894 and the Victorian branch inaugurated in 1904 at the Port Phillip Club Hotel, Melbourne.

NATIONAL THEATRE BUILDING TURNS 90

The building which houses the National Theatre St Kilda turns 90 in April 2011. Prior to its purchase four decades ago, in 1971, by The National Theatre Movement who converted it to a live performance venue, it was the Victory Cinema which opened in 1921.

Mr Samuel Tierney (S.T.) Alford, a councillor and Mayor of St Kilda in the early 1920's, performed the official opening of The Victory, and its first manager Vaughan C Marshall, would later become manager of The Astor. (Geo Florence, The Astor Theatre).

Sir Rupert Hamer*, who succeeded Sir Henry Bolte as 39th Premier of Victoria (1972—1981), officially opened The National Theatre in 1974.

The conversion from cinema to a live theatre venue set a benchmark and was written up in several major international journals. John Cargher AM, then General Manager of the National, was principally responsible for the overall redesign while George Johnson [current SKHS President's father] was the structural engineer.

The National Theatre St Kilda is of historical, social and architectural significance to the State of Victoria. The building is of special interest because of its association with F W Thring of Esgee Pictures and the early Australian Film Industry as well as the National Theatre Movement, Australia's oldest professional arts company established in 1935 by Gertrude Johnson OBE.

* Hamer was involved in the introduction of the Historic Buildings Act 1974 and made moves in 1977 to protect several other significant buildings in Melb. (including the Windsor Hotel).

WELCOME TO THE ASTOR'S 75TH YEAR

2011 marks 75 years since the newly built The Astor Theatre opened its doors on April 4th, 1936 to the film going public, and we are all invited to join the celebration. Look out for an announcement of the event in the media.

The Astor, along with a very, very small number of venues, is fortunate to survive intact while most classic style film houses have long since closed down, been demolished, or suffered the sad fate of housing a discount store chain or just left to decay.

Even rarer is the fact The Astor still runs to this day on the format of a bygone era – screening mostly DOUBLE FEATURES all in a single screen filmhouse using the original and best medium - Film.

It's the theatre's charm and uniqueness; value for money (two movies for the price of one), its enormous Choc lces; knowledgeable and devoted staff; the fact their picture and sound quality is monitored and cared for, and of course, their resident cat Marzipan, that makes it a favourite amongst Melbourne film fans.

But most of all it's the movies. Where else can we experience those cherished classics the way they were meant to be seen, on film print and on the big screen.

The Astor hopes you still get a shiver of excitement to see Clark Gable, Cary Grant, Grace Kelly, Audrey Hepburn, James Dean and so many more strut the screen delivering some of the most enduring and beloved lines and performances of all time.

It's why they do what they do, and they hope to still be open 75 years from now presenting movies to generations of film fans to come in their very special and unique way.

ST KILDA HISTORY SOCIETY

DIARY JULY—SEPT 2011

Members Free

Non Members \$5

bookings appreciated

Email: info@skhs.org.au; Ph message 9209 6866 Mobile 0405 510 799

MARCH

Sunday 20th

Guest Leader: Patricia Convery

Amble through the history of St Kilda Gdns

RSVP essential: details on page 1

APRIL

Thursday 14th at 6.30pm

Guest Speaker: Meyer Eidelson

Ten St Kilda Eccentrics

St Kilda Library

MAY

Thursday 19th at 6.30pm

Guest Presenter: Dr Seamus O'Hanlon

Melbourne Remade: The Inner City

since the 70s

St Kilda Library

JULY

Sunday July 10 at 2.30pm

Guest Speaker: TBA

Combined Meeting w Friends of St Kilda Cemetery

Community Rm, off Foyer St Kilda Library

SEPTEMBER

Sunday 11th at 2.30pm

2010-2011 AGM

2011-2012 SKHS Committee Election

Community Rm, off Foyer St Kilda Library

any financial member eligible to nominate