

Esplanade Vaults, St Kilda



black & white images
(cropped)
left: c.1948
[with verandah posts]
right: March 1952
[no verandah posts]
Images: Courtesy SLV



all color images
August 2008
Peter Johnson
SKHS
Heritage Officer



The Esplanade Vaults

It appears that the vaults (above) and the cable tramway extension were completed about 1891.

The vaults, opposite the pier, were built in that position to widen the Esplanade and create a uniform street width when the cable tramway was constructed. Previously the roadway had narrowed along that section.

The first arch in the image (centre left) led to a wide run of bluestone steps up to the Esplanade. The stairway ran along the inside face of the wall back in the direction of Fitzroy Street. These were covered over when the bridge was constructed in the early 1970s.

Originally the vaults contained ten shops with verandahs, the rent from which was supposed to pay the interest on the council's loan to construct them. The works were undertaken under the direction of then city surveyor, W. B. Downe and cost the council [ratepayers] more than £1,000.

The shop verandahs were removed in the 1950s, and the vaults bricked up when road widening took place in the 1970s. This road widening resulted in the narrowing of the sidewalk on Jacka Boulevard.

Brief History of Solar System

On Sunday, 21 September, Mayor Cribbes 'decloaked' the 1:1 billion scaled model of the c.4.5 billion year old solar system on behalf of (1) Port Phillip City terrestrials and (2) Tony Wheeler of Lonely Planet Wheeler Foundation – the joint sponsors of the project.

The project was the brainchild of science graduate turned artist, Chris Lansell who teamed up with visual artist Cameron Robbins to create what may be one of Australia's largest outdoor educational resources to scale.

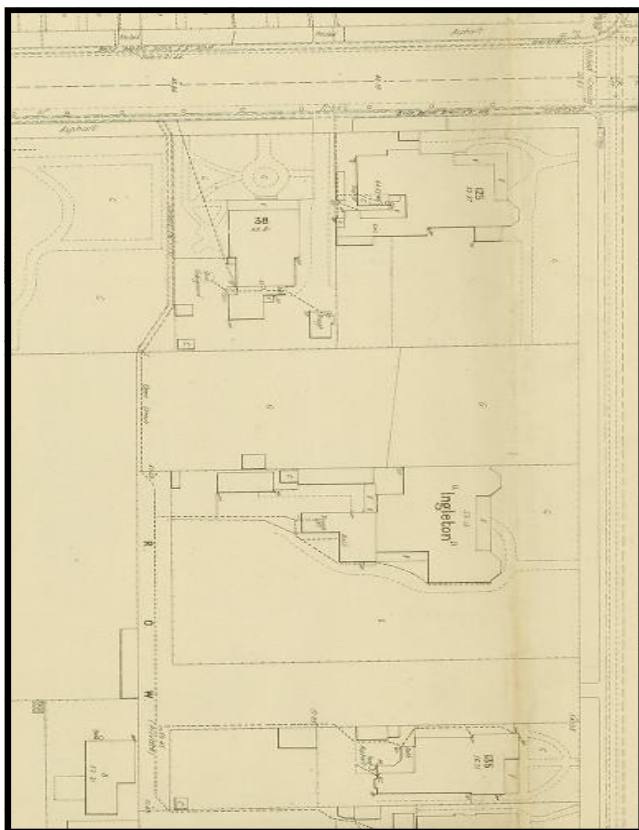
The eight planets are aligned along Hobson's Bay Foreshore walk and bike path to the pin-sized planetoid Pluto, 0.24cm across, in Port Melbourne 5.9kms away. Each one sits on a bluestone plinth with an information panel. The larger planets are cast in bronze while the smaller ones are machined from marine grade stainless steel. The total project cost \$111,000, with the sun alone costing \$30,000, and nearly three years to execute.

The sunstar replica, weighing 350 kg and measuring nearly 1.5 metres across, is located north of St Kilda Lighthouse. Earth, the '3rd rock from the Sun', is about the size of a marble and located 150 metres away (FB) (Main Source: CoPP Media release)



Planet Earth Installation

Image: City of Port Phillip
Media Release, 22 Sept 2008



'Ingleton' 131-133 Alma Rd

Image: MMBW
Plan 1408, dated 1897

'Ingleton', East St Kilda

Prior to becoming Victoria's most prominent suffragist, Vida Goldstein and her two sisters Aileen and Elsie ran a fee-paying preparatory school for boys and girls in Inkerman Street, St Kilda circa 1890.

Two years later they relocated the school to Ingleton — by then the Goldstein family home in 131-133 Alma Road, East St Kilda (refer sketch col.1) — since demolished.

Ingleton School (1892-c.1899) was located on the south side of Alma Road, one property east of Westbury Street and almost directly opposite the former Clyde* School (134 Alma Rd).

Source: Peter Johnson, SKHS Heritage Officer

*Lina Goldstein, another of Vida Goldstein's sisters, married banker H. J. Henderson in 1892. Henderson's sister, Isabella Henderson opened Kalymna, a girls school in Acland St, before incorporating it in 1898 with Oberwyl school in Burnett St. She later purchased *Fairelight* School, 134 Alma Rd and renamed it Clyde Girls School in 1910. It became a day and boarding school for girls and in 1919 she transferred the school to Braemar House, Woodend. Joan Lindsay, nee à Beckett Weigall, who married artist Darryl Lindsay, was educated at Clyde Girls School when it was located in St. Kilda. She used Clyde as inspiration for her enigmatic novel, *Picnic at Hanging Rock*, published 1967. (FB)